

FSC-1

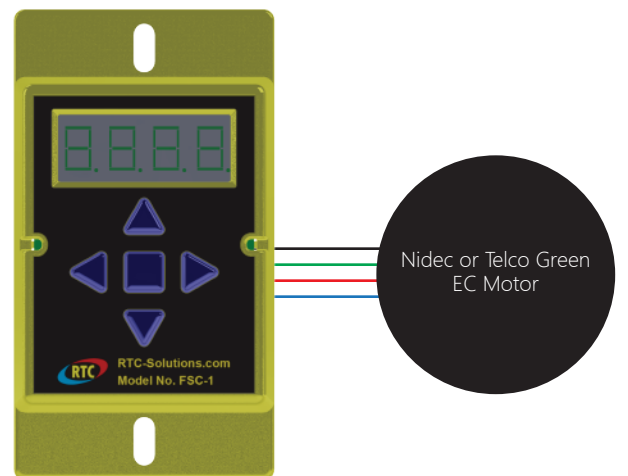
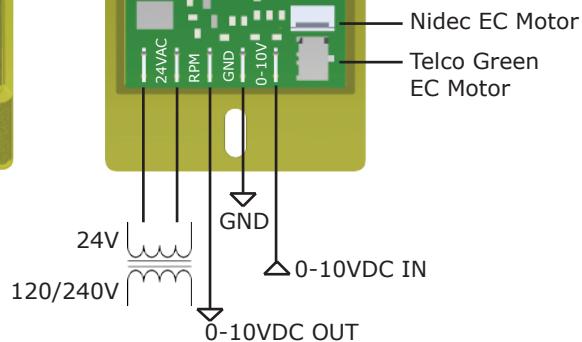
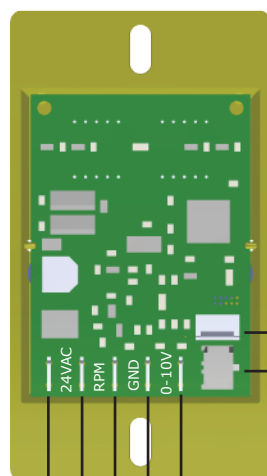
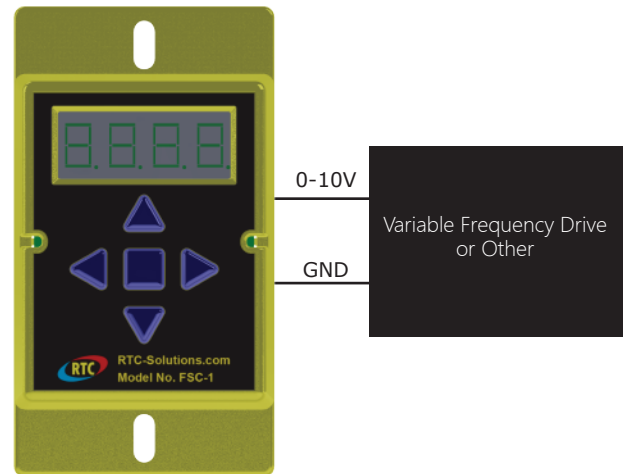
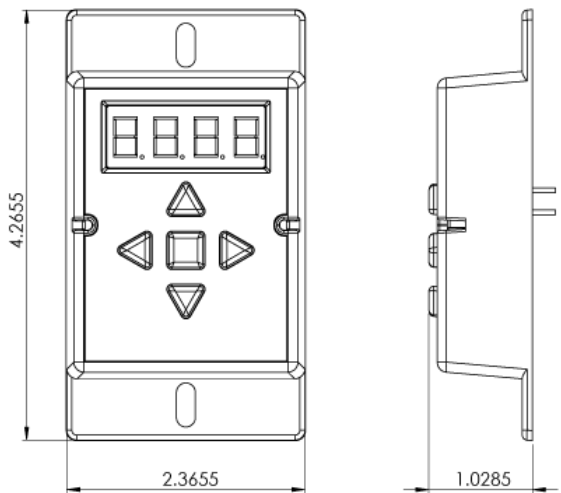
The **FSC-1** is a fully programmable EC motor control with a four digit LED display and five button interface which allows the operator to easily change settings to accommodate their needs.



- ◆ Speed Control for Nidec and Telco Green EC Motors
- ◆ Two EC Motor Connections with Modulating Outputs
- ◆ Digital Adjustment via button and LED interface
- ◆ Remote Control via 0-10VDC
- ◆ Programmable Low Speed and High Speed Limits
- ◆ RPM Feedback
- ◆ Selectable Applications
 - ◆ Motor speed control
 - ◆ 0-10V reference



EC MOTOR CONTROL FSC-1



FSC-1 Specifications

Power Requirements	24VAC @ 20VA
Ambient Operating Temperature	-40°F-140°F -40°C-60°C
Dimensions	2.3655"W x 4.2655"H
Weight	.128 lbs

RTC Solutions
4380 Oakes Road, Suite 804
Davie Fl, 33314
Ph. (877) 351-4702

